

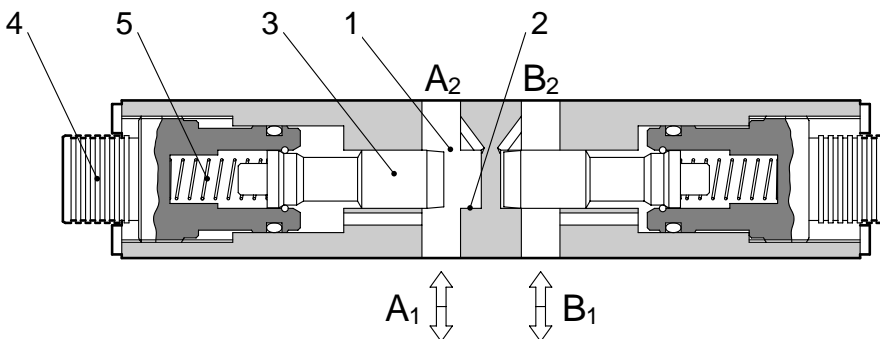
Size 6 & 10 up to 315 bar up to 30 & 70 L/min	Double Throttle Check Valve Sandwich Plate Valve Type S-2TC6 & S-2TC10, Series 10	Data Sheet S-1005/10.98 GB
---	---	----------------------------------

Features

- ◇ For limiting the main or pilot fluid flow of two actuator connections.
- ◇ For meter-in or meter-out control.
- ◇ Porting pattern to DIN 24 340 form A, ISO 4401 and CETOP-RP 121H.



Type S-2TC10



Functional Description

Type S-2TC6/S-2TC10 Series 10 Valves are double throttle/check valves of sandwich plate design. The valves provide limitation to the main or pilot flow of one or two actuators. The valves limit the flow in one direction and allow free-flow in the other.

Two identical valves control the flow of ports A₁, A₂ and B₁, B₂.

The valves basically comprise a throttling point (1), a valve seat (2), a throttling spool (3), an adjustment screw (4) and a spring (5).

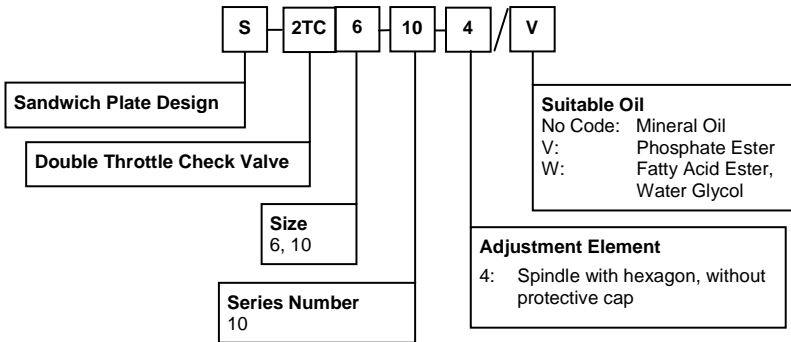
For meter-in, the control fluid passes from port A₁ to port A₂ via the throttling point (1). The throttling point consists of a valve seat (2) and a throttling spool (3).

The flow through the throttling point is adjusted by moving the throttling spool (3) via the adjustment screw (4).

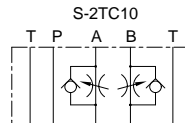
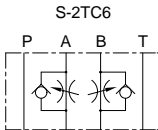
Flow from the port A₂ moves the throttling spool (3) against the spring (5) in the direction of the adjustment screw (4) causing the valve to act as a check valve and allowing the fluid to flow. By different installation arrangements the valve can be fitted as a meter-in or meter-out control.

Model S-2TC6 & S-2TC10	Page 1.5	Data Sheet S-1005/10.98	
---------------------------	-------------	----------------------------	--

Ordering Code – Double Throttle Check Valve



Symbols



Technical Data

For applications outside the following parameters, please consult Kawasaki Precision Machinery (UK) Ltd.

Maximum Operating Pressure	315 bar
Pressure Fluid	Mineral oil, phosphate ester, fatty acid ester and water glycol. Phosphate ester is only suitable for use with FPM seals.
Pressure Fluid Temperature Range	-20°C to +70°C
Viscosity Range	2.8 to 380cSt
Maximum Flow	30 L/min - S-2TC6; 70 L/min - S-2TC10
Degree of Contamination	Maximum permissible degree of contamination of the fluid is to NAS 1638 Class 9. Kawasaki recommend that a filter with a minimum retention rate of $\beta_{10} \geq 75$ is used.
Weight	1.0kg - S-2TC6; 1.7 kg - S-2TC10



Model
S-2TC6 & S-2TC10

Page
2.5

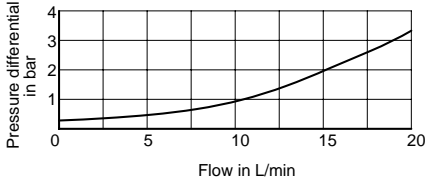
Data Sheet
S-1005/10.98

Characteristic Curves

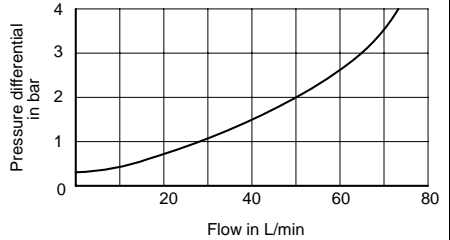
Measured at $v = 36cSt$ and $t = 50^{\circ}C$

Free flow (B to A)

Type S-2TC6

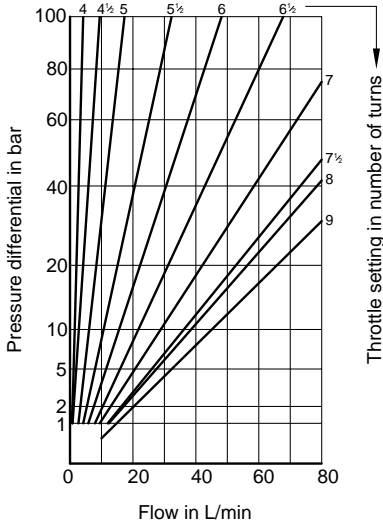


Type S-2TC10

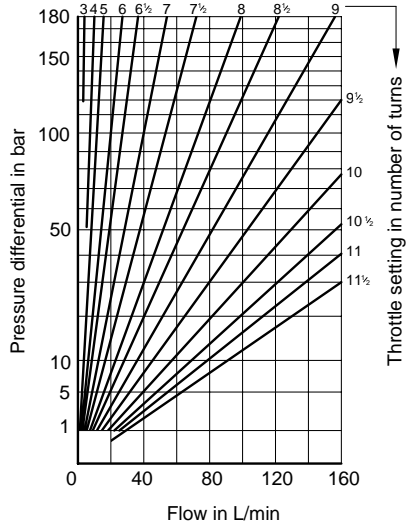


Throttle Setting Characteristic

Type S-2TC6



Type S-2TC10

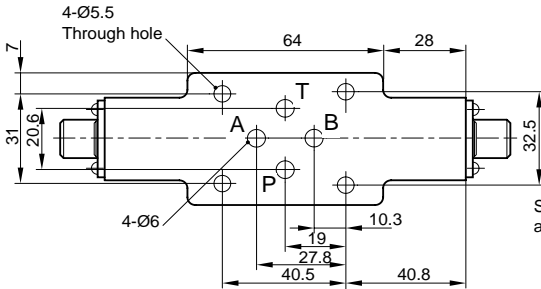


Model
S-2TC6 & S-2TC10

Page
3.5

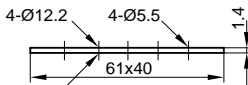
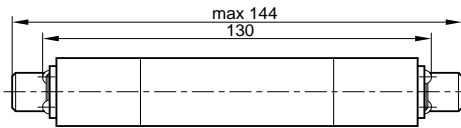
Data Sheet
S-1005/10.98

Unit Dimensions – Type S-2TC6 (dimensions in mm)



Socket screw
across flats 6

This symbol indicates
the direction of free flow
and throttled flow.



O-ring: AS568 No 012
(for ports A, B, P and T)

O-Ring Plate

S-2TC6 can be used either
for meter-in or meter-out by
changing the installation surface.

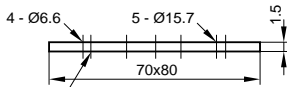
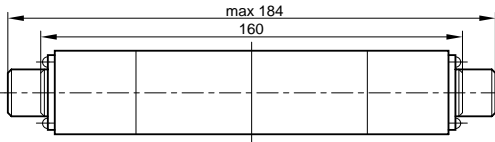
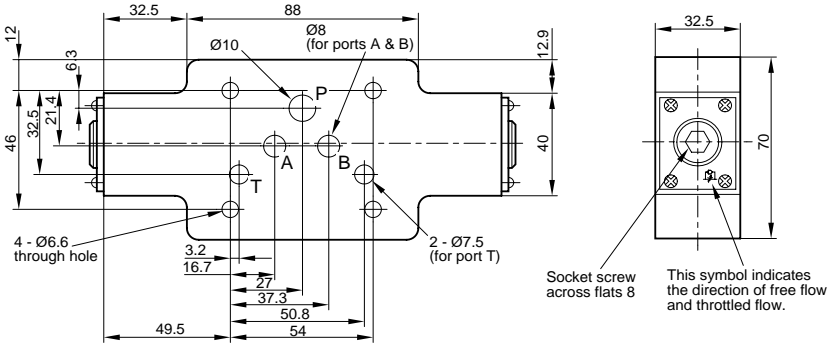
Kawasaki
Hydraulic Products

Model
S-2TC6 & S-2TC10

Page
4.5

Data Sheet
S-1005/10.98

Unit Dimensions – Type S-2TC10 (dimensions in mm)



O-ring: 12x2
(for ports A, B, P and T)
O-Ring Plate

S-2TC10 can be used either for meter-in or meter-out by changing the installation surface.

KAWASAKI PRECISION MACHINERY (UK) LTD
Ernesettle, Plymouth, Devon, PL5 2SA, England
Tel: +44 1752 364394 Fax: +44 1752 364816
E Mail: info@kpm-uk.co.uk

The specified data is for product description purposes only and may not be deemed to be guaranteed unless expressly confirmed in the contract

ALL RIGHTS RESERVED, SUBJECT TO REVISION

Model
S-2TC6 & S-2TC10

Page
5.5

Data Sheet
S-1005/10.98

