
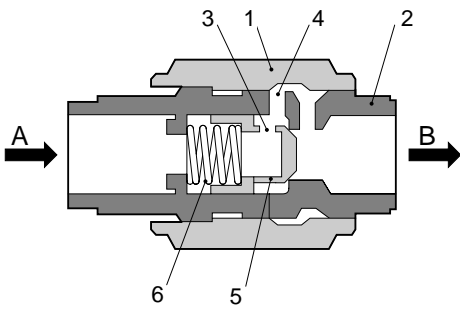

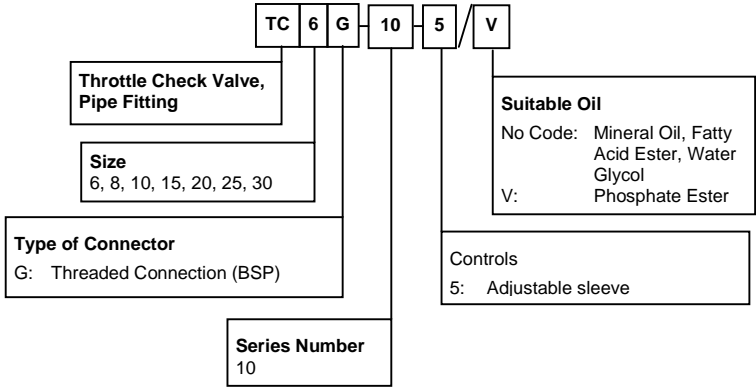


<p>Size 6 to 30 up to 315 bar up to 400 L/min</p>	<p>Throttle Check Valve Pipe Fitting Type TC, Series 10</p>	<p>Data Sheet F-1002/10.98 GB</p>
<p>Features</p> <ul style="list-style-type: none"> ◇ Suitable for direct in-line mounting. ◇ Pressure and viscosity dependent. ◇ Screw connection for easy installation. ◇ Scale provided for accurate settings. ◇ Control notch provided for precise settings. <div style="text-align: right; margin-right: 100px;">  <p>Type TC</p> </div> <div style="text-align: center; margin: 20px 0;">  </div> <p>Functional Description</p> <p>Type TC Series 10 Throttle Valves are pressure and viscosity dependent throttle check valves.</p> <p>The valves comprise an adjustable sleeve (1), a housing (2), side drillings (3), a throttling point (4), a poppet valve (5) and a spring (6).</p> <p>The valve throttles the flow in one direction and allows free flow in the reverse direction. The throttling point is formed using the housing (2) and the adjustable sleeve (1), the rate of throttling can be varied steplessly by turning the adjustable sleeve (1).</p> <p>With the flow passing in the throttling direction, the spring (6) and the fluid pushes the poppet valve (5) onto its seat blocking the flow. Fluid is passed to the throttling point (4) via the side drillings (3).</p> <p>With fluid passing in the reverse direction, fluid pushes the face of the poppet valve (5) against the spring (6) and lifts the valve. The fluid passes unthrottled through the valve; this also has a self cleaning effect on the valve.</p>		
<p>Model TC</p>	<p>Page 1.4</p>	<p>Data Sheet F-1002/10.98</p>
		

Ordering Code – Throttle Check Valve, Pipe Fitting



Technical Data

For applications outside the following parameters, please consult Kawasaki Precision Machinery (UK) Ltd.

- Pressure Fluid: Mineral oil, phosphate ester, fatty acid ester and water glycol. Phosphate ester is only suitable for use with FPM seals.
- Pressure Fluid Temperature Range: -20°C to +70°C
- Degree of Contamination: Maximum permissible degree of contamination of fluid is to NAS 1638 Class 9. Kawasaki recommend a filter with a retention rate of $\beta_{10} \geq 75$.
- Viscosity Range: 2.8 to 380 cSt
- Maximum Working Pressure: 315 bar

Weight	Size 6	Size 8	Size 10	Size 15	Size 20	Size 25	Size 30
	0.3 kg	0.4 kg	0.7 kg	1.1 kg	1.9 kg	3.2 kg	4.1 kg



Model
TC

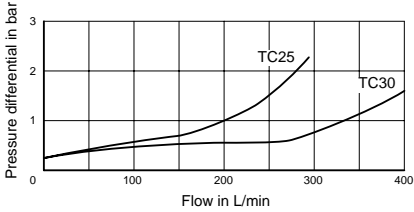
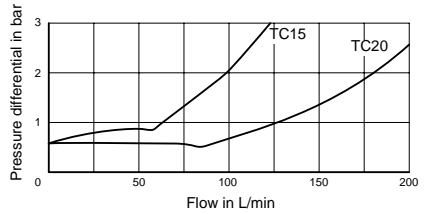
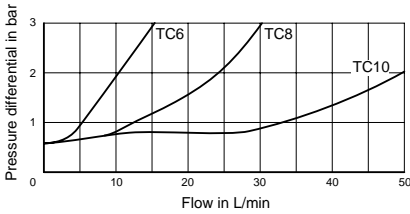
Page
2.4

Data Sheet
F-1002/10.98

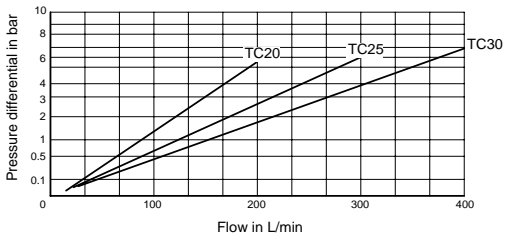
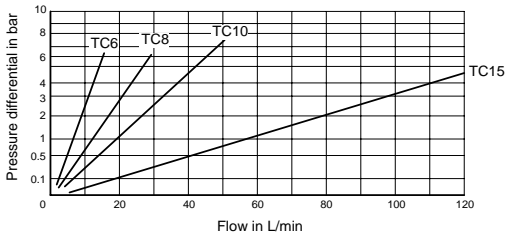
Characteristic Curves

Measured at $v = 36sSt$ and $t = 50^{\circ}C$

Free flow (B to A)



Full open (A to B)

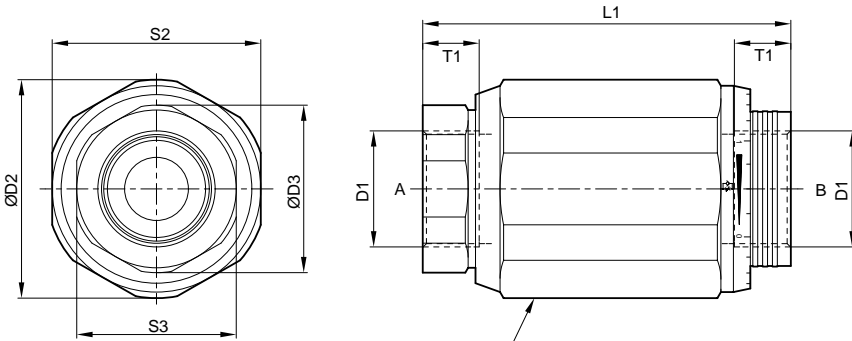


Model
TC

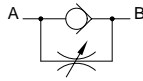
Page
3.4

Data Sheet
F-1002/10.98

Unit Dimensions (dimensions in mm)



Do not adjust while pressure is being applied



Symbol

Type	D1	D2	D3	S2	S3	L1	T1	Weight
TC6G-10-5	G¼	44	29.5	41	27	65	12	0.3 kg
TC8G-10-5	G⅜	49.5	33	46	30	65	12	0.4 kg
TC10G-10-5	G½	58	42.5	55	41	80	14	0.7 kg
TC15G-10-5	G¾	66	49.5	60	46	100	16	1.1 kg
TC20G-10-5	G1	78	52.5	70	50	110	18	1.9 kg
TC25G-10-5	G1¼	90	62.5	85	60	130	23	3.2 kg
TC30G-10-5	G1½	90	69	85	65	150	23	4.1 kg

KAWASAKI PRECISION MACHINERY (UK) LTD
 Ernesettle, Plymouth, Devon, PL5 2SA, England
 Tel: +44 1752 364394 Fax: +44 1752 364816
 E Mail: info@kpm-uk.co.uk

The specified data is for product description purposes only and may not be deemed to be guaranteed unless expressly confirmed in the contract

ALL RIGHTS RESERVED, SUBJECT TO REVISION

Model
TC

Page
4.4

Data Sheet
F-1002/10.98

